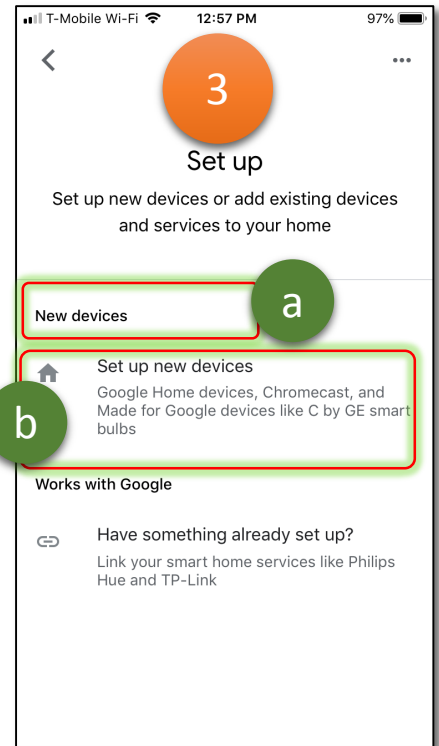
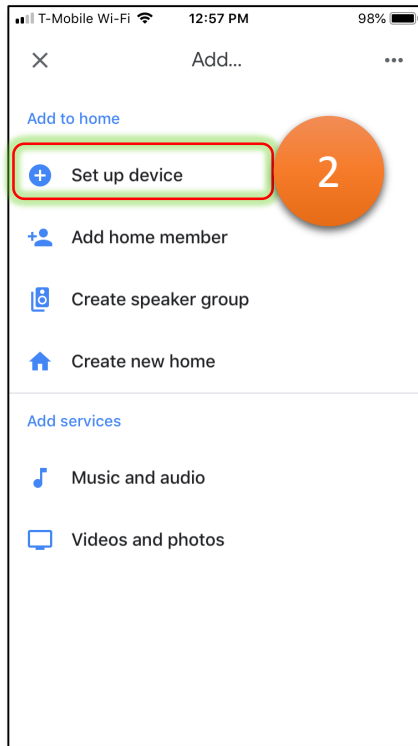
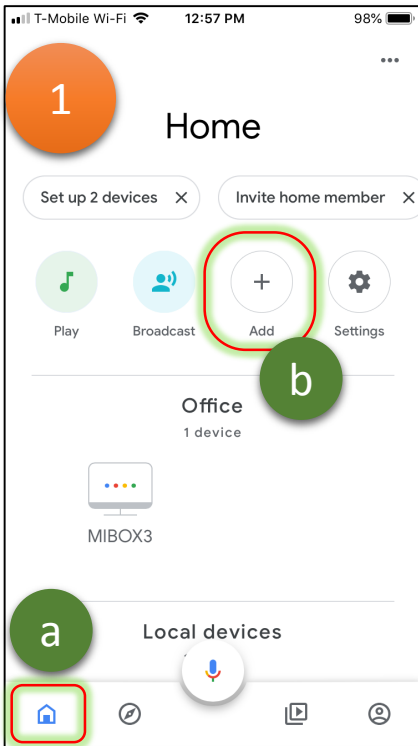
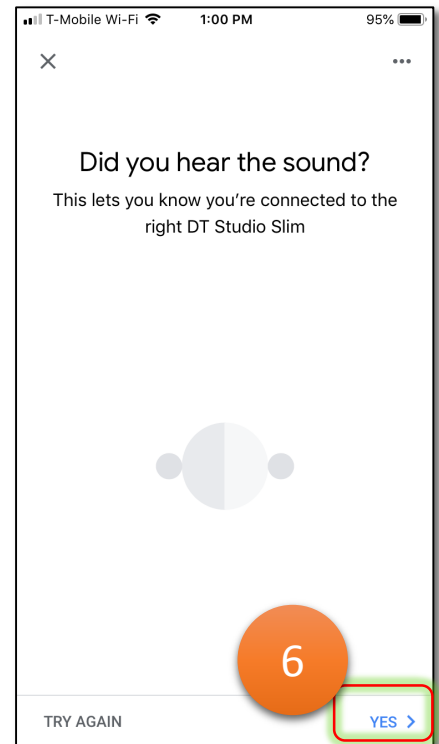
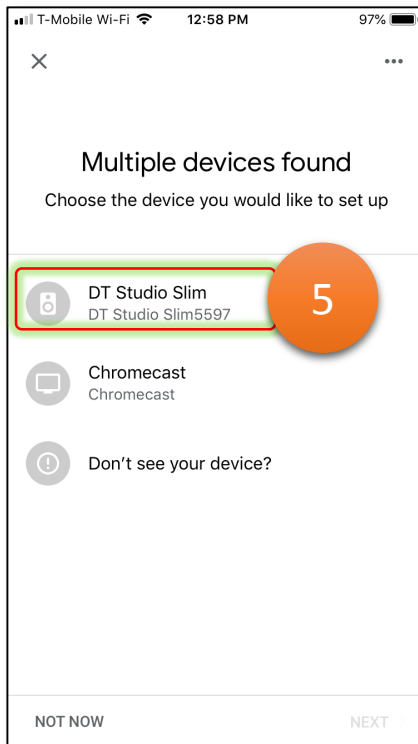
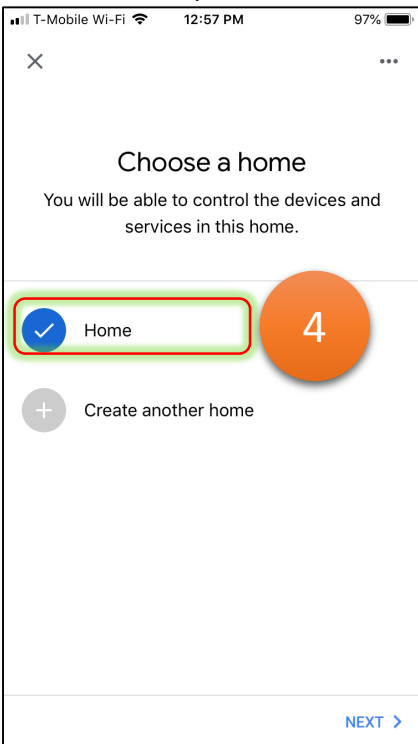


How to connect the Definitive W Studio Slim sound bar to the Internet

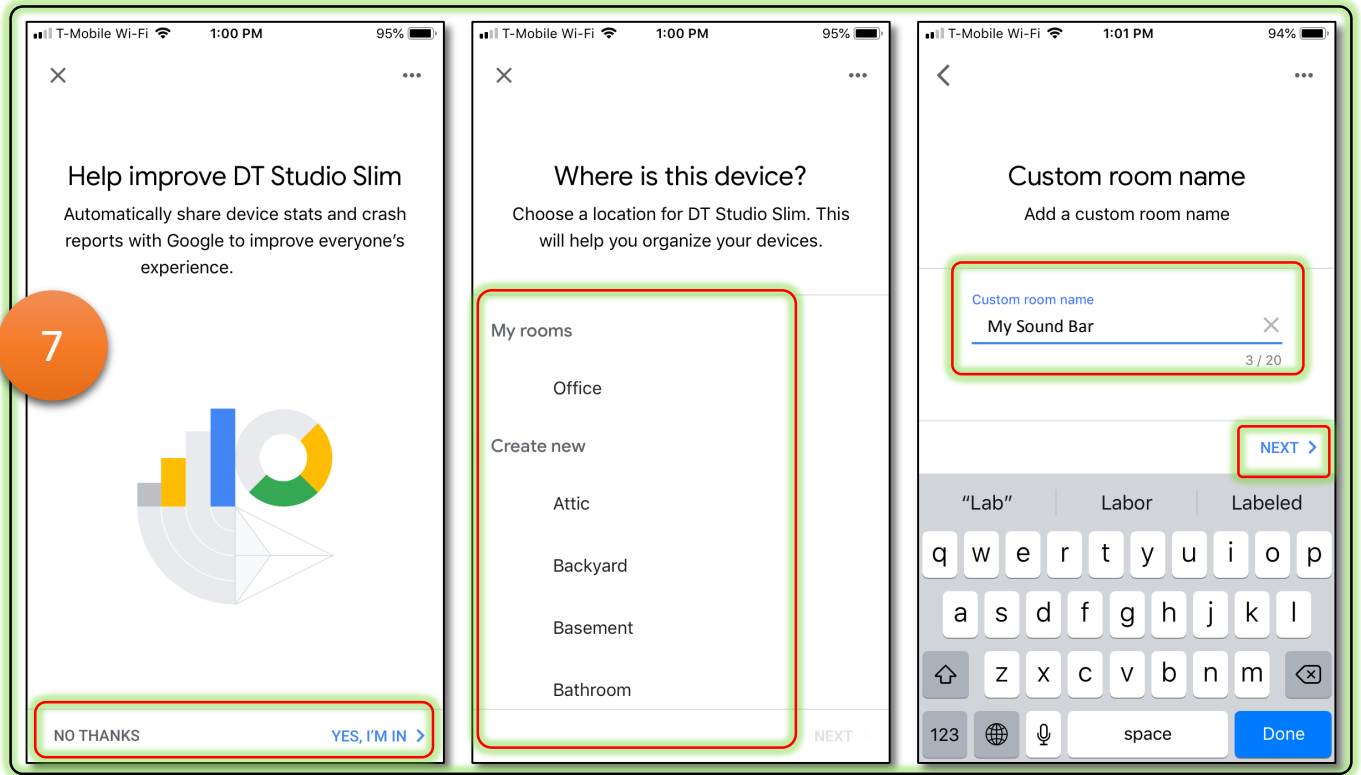
1. Open the Google Home app and from (a) the Home screen, tap the (b) Add icon “+”.
2. Select “Set up device.”
3. Under (a) “New devices”, select (b) “Set up new device.”



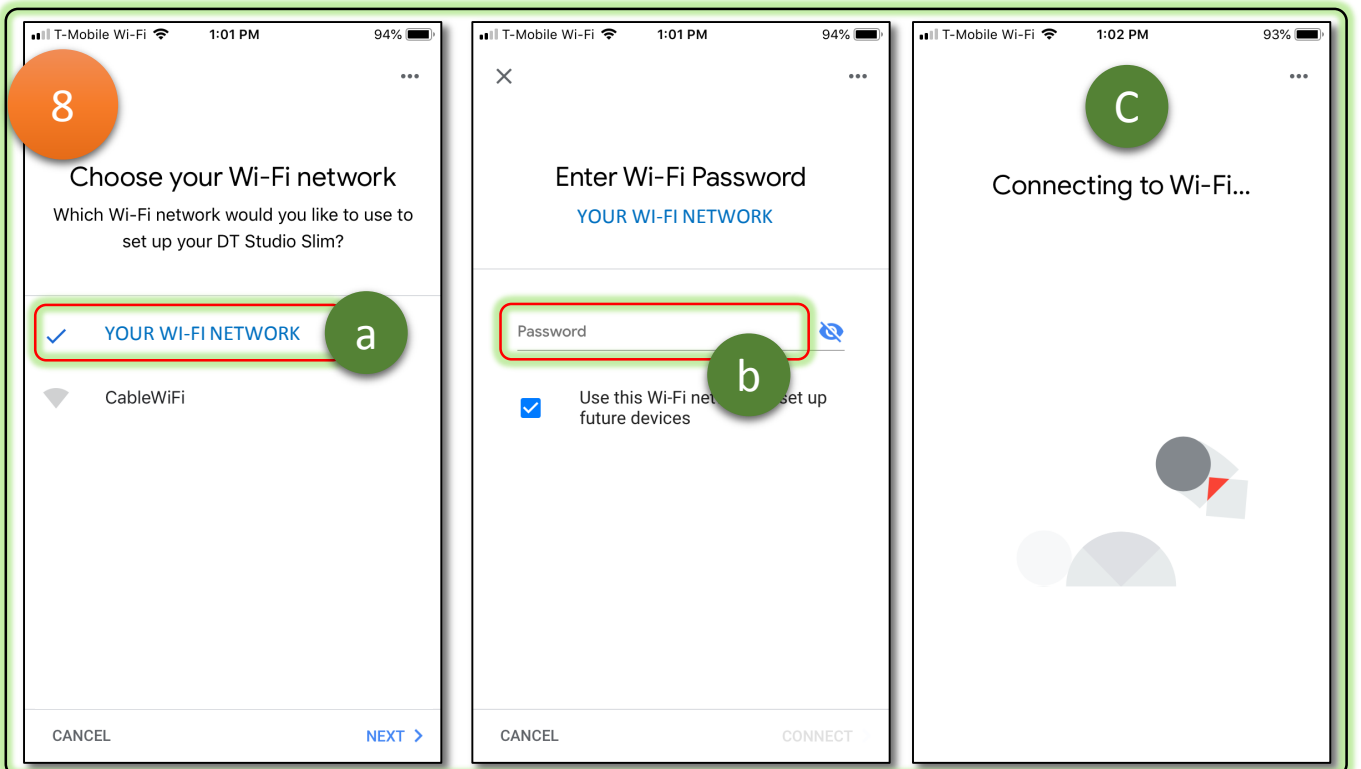
4. Select “Home” and click “NEXT.”
5. Select your device (DT Studio Slim) from the list of devices found and click “NEXT.”
 - Make sure you’re close to the sound bar; when connection is established, the sound bar will make a sound.
6. Click Yes if you heard the sound from the sound bar.



7. Follow the sharing device stats, location selection and name prompts and then click "NEXT."



8. Choose (a) your Wi-Fi network and enter (b) your password. (c) Note: Wi-Fi connection starts now.



9. Click “CONTINUE” when prompted “Linking your DT Studio Slim.”

10. Click “NEXT” when the “Almost done!” screen appears and follow the final prompts.

Your sound bar is now connected to the internet.

